

MTU SERIES 4000 IRONMEN: PROFITABLE, ROBUST, RELIABLE. BUILT TOUGH TO TAKE IT.



The MTU Series 4000 IRONMEN benefits:

- > **Reduced fuel costs:** Industry leading overall fuel consumption, down to 195g/kWh at rated power
- > **Reduced operating cost:** Increased TBO to 34.000h for reduced operating costs and maximum availability
- > **Best overall performance:** Highest torque in class produces maximum acceleration and exceptional maneuverability
- > **Robust design:** Proven basic engine, designed for heavy duty applications under tough conditions
- > **High reliability:** 12 months standard warranty with optional extended coverage of up to 6 years
- > **Easy maintenance:** Engine design allows for simplified maintenance and access to all components, both internal & external
- > **Flexibility:** Optional front end PTO available with 100% torque to drive accessories such as FiFi fire pumps etc.
- > **Compatibility:** Models designed to meet input requirements of major „Z“ drives and other propulsion systems
- > **Environmental Stewardship:** Compliant with all „world“ emission regulations and prepared for the next stage
- > **Availability:** Worldwide Service Network with 24h spare part availability - over 1.100 MTU service locations worldwide
- > **Safety:** SOLAS compliant as standard

More than 12.000 MTU Series 4000 units sold in all applications.

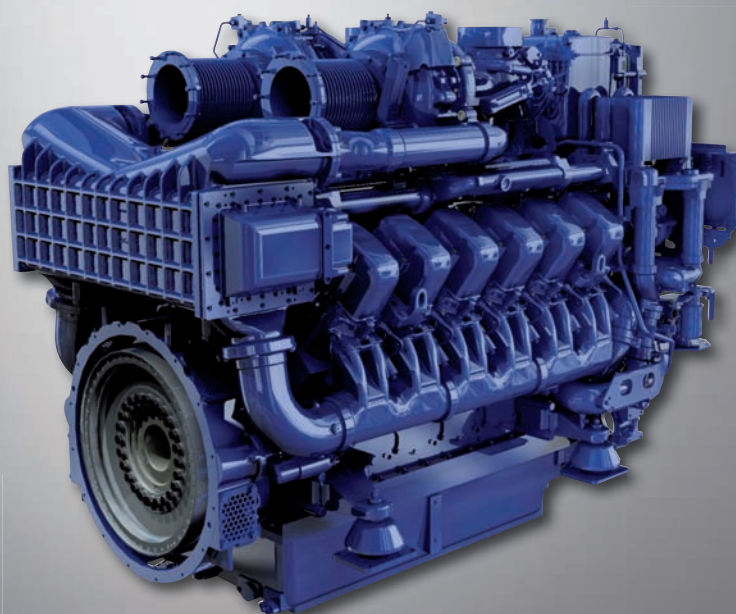


www.mtu-ironmen.com

Standard Scope:

- > Long stroke engine designed for heavy duty applications
- > Factory engineered isolation mounting system
- > Factory approved Centa torsional / mis-alignment coupling
- > Keel cooling or heat exchanger cooling option
- > Engine Interface Module that allows use of all market control and monitoring systems using J1939 protocol
- > Second generation Common Rail injection system
- > Certified to all major classification societies
- > Certified to all current and future IMO, EPA Tier II and ZKR2 regulations

Services: Extended warranty options, Maintenance contracts, Torsional vibration calculation, System integration, Remote Monitoring Diagnostic.



Main propulsion engines	
Engine type	kW(bhp)@rpm
8V4000M53R	746(1000)@1.600
8V4000M53	920(1230)@1.800
8V4000M63	1.000(1340)@1.800
12V4000M53R	1.140(1530)@1.600
12V4000M53	1.380(1850)@1.800
12V4000M63*	1.500(2010)@1.800
16V4000M53R*	1.520(2040)@1.600
16V4000M53	1.840(2470)@1.800
16V4000M63	2.000(2680)@1.800
16V4000M63L	2.240(3000)@1.800

* 1492 kW on request

On board gensets and Diesel Electric drives	
Engine type	kW@rpm
50 Hz	
8V4000M23F	760@1.500
8V4000M33F	880@1.500
12V4000M23F	1.140@1.500
12V4000M33F	1.320@1.500
16V4000M23F	1.520@1.500
16V4000M33F	1.760@1.500
60 Hz	
8V4000M23S	920@1.800
8V4000M33S	1.040@1.800
12V4000M23S	1.380@1.800
12V4000M33S	1.380@1.800
16V4000M23S	1.840@1.800
16V4000M33S	2.080@1.800

Tognum Group Companies

**Europe/Middle East/Africa/
Latin America**

MTU Friedrichshafen GmbH
88040 Friedrichshafen
Germany

Phone +49 7541 90 7015
Fax +49 7541 90 7081
marineregion1@mtu-online.com
www.mtu-online.com

**Asia/Australia/
Pacific**

MTU Asia Pte. Ltd.
1 Benoi Place
Singapore 629923
Republic of Singapore
Phone +65 6861 5922
Fax +65 6861 3615
marineregion2@mtu-online.com
www.mtu-online.com.sg

**USA/Canada/
Mexico**

MTU Detroit Diesel, Inc.
13400 Outer Drive West
Detroit, Michigan 48239
USA
Phone +1 313 592 7806
Fax +1 313 592 5137
marineregion3@mtu-online.com
www.mtudetroitdiesel.com